

CLIMATE CONTROL BRACKET

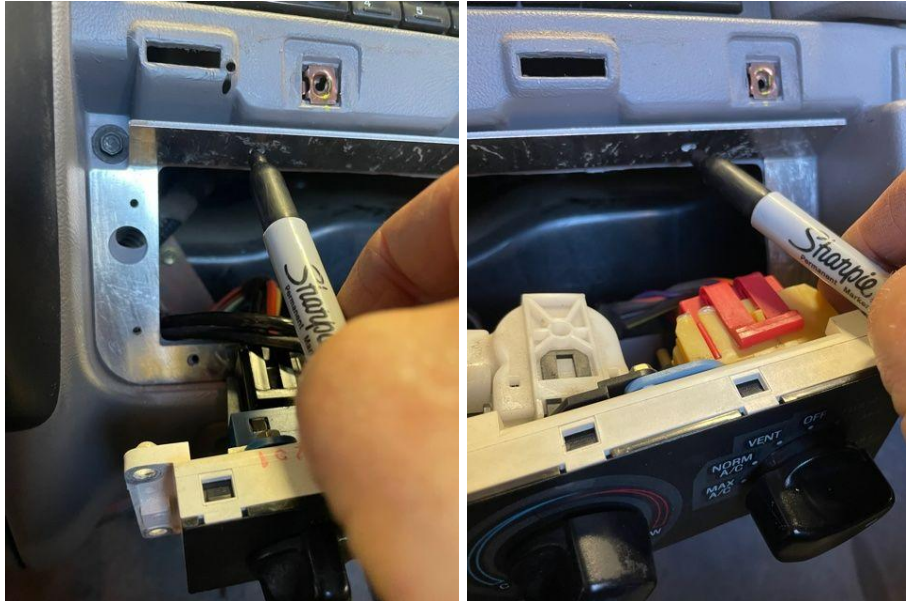
1. Start by removing the dash trim piece by pulling towards you. A plastic trim removal tool is recommended. The trim piece is held on by metal clips.



2. Remove the two 7 mm climate bezel screws and pry out to remove the bezel.



3. Remove the four 7 mm climate control screws and remove the climate control assembly.
4. Temporarily install the new OBS Solutions climate control bracket. While pushing the bracket into place mark through the two upper 11/64 holes and the two lower 11/64 holes with a good marker.



5. Remove the OBS Solutions climate control bracket. Using a 1/8 inch drill, drill out the marked area. (We like to use a pic tool that we head up and pierce the marked locations. We find this is a great alternative to drilling).



6. Re-install the OBS Solutions climate control bracket and install the four phillips screws that were provided into the four 11/64 holes.





7. Re-install the climate control assembly to the OBS Solutions bracket and re-install the climate control bezel and dash trim piece.

